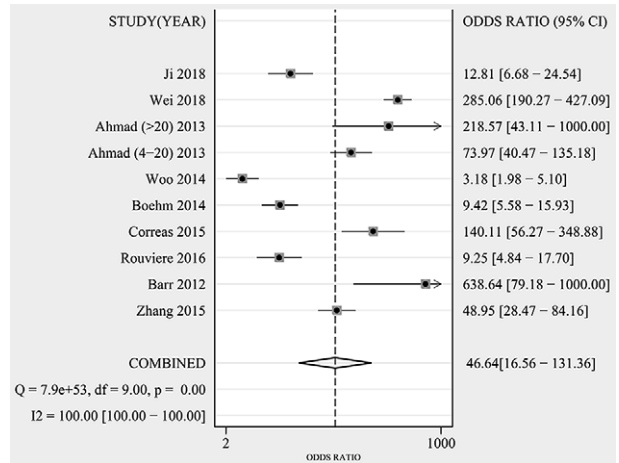
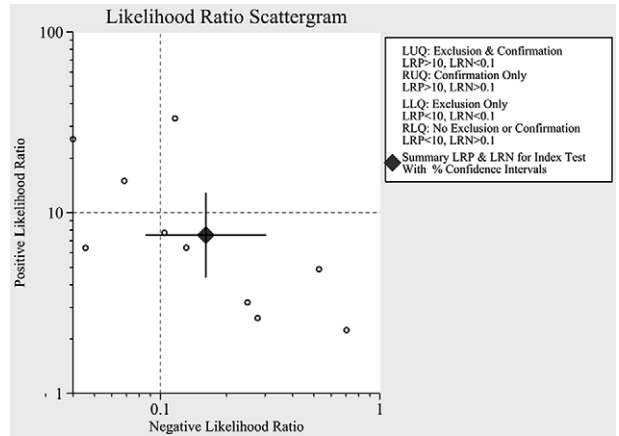


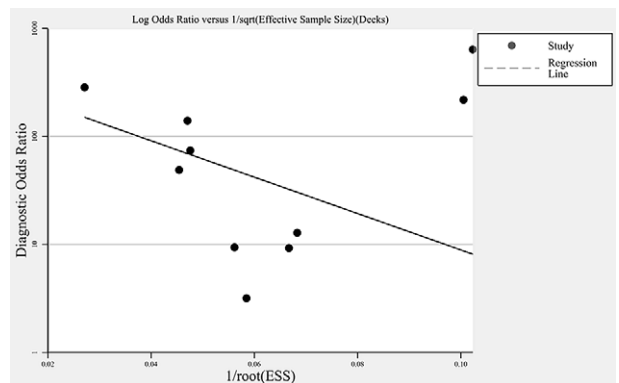
Supplemental fig 1. Quality assessment of the included studies based on the revised Quality Assessment of Diagnostic Accuracy Studies.



Supplemental fig 2. The pooled results of the diagnostic odds ratio.



Supplemental fig 3. The likelihood ratio scattergram based on the results of the positive and negative diagnostic likelihood ratio.



Supplemental fig 4. Deeks' funnel plot asymmetry test to evaluate publication bias.